



HUNTER HEIGES & GROSS
ARCHITECTS & ENGINEERS

Dedication Program

REYNOLDS AREA HIGH SCHOOL

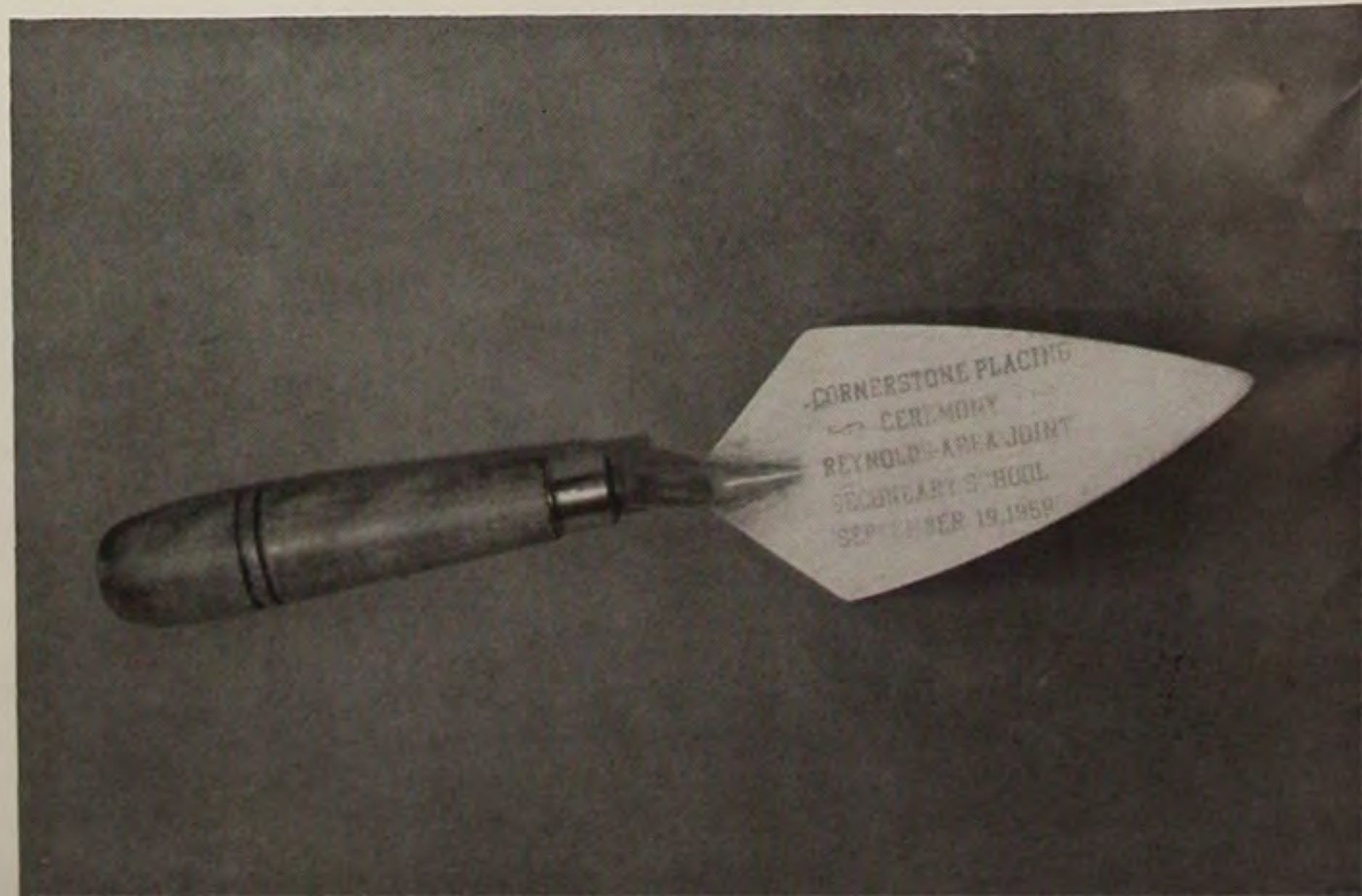
1961



PLACING THE CORNERSTONE

Vincent B. Moore, Representing State Public School Building Authority
Luther J. Kuder, Chairman, Reynolds Development Board of Trustees
Gustav R. Wall, President, Reynolds Area Joint School Board
John B. Cutler, Superintendent, Mercer County Schools
Carl F. Welch, Supervising Principal, Reynolds Area Joint Schools

THE TROWEL
USED IN PLACING
THE CORNERSTONE





**REYNOLDS AREA
JOINT SCHOOL**

PROJECT NUMBER: 722-587

**BOARD OF
EDUCATION**

DELAWARE TOWNSHIP
 H. B. MEANS, JR., PRES.
 RALPH H. GAMBLE, VICE PRES.
 MRS. KATHLEEN GIBBS
 ORVAL L. GIBBS
 LOBBY D. GIBBS
 FRED C. GIBBS
 MELVIN E. GIBBS

GUSTAV R. WALL,
 RALPH H. GAMBLE,
 H. B. MEANS, SR.

PRESIDENT
 VICE PRESIDENT
 SECRETARY

FREDONIA BORO.
 OWEN D. EGGES, PRES.
 JOHN D. EGGES, VICE PRES.
 MRS. ELLA GIBBS
 DONALD L. GIBBS
 MRS. POLA ZIMMER
 GENE D. ZIMMER
 HOMER ZIMMER

PYMATUNING TOWNSHIP
 GEORGE L. GIBBS, PRES.
 L. G. GIBBS, VICE PRES.
 EUGENE J. GIBBS
 WIFE E. GIBBS
 LOUIE GIBBS
 GLENN E. GIBBS
 VICTOR J. GIBBS
 DAVID J. GIBBS

WEST SALEM TOWNSHIP
 E. G. GIBBS, PRES.
 EUGENE J. GIBBS, VICE PRES.
 GEORGE J. GIBBS
 CHARLES J. GIBBS
 LINA L. GIBBS
 JILL L. GIBBS
 LEO L. GIBBS
 GILL L. GIBBS
 EIC GIBBS

GILL E. GIBBS,
 JOHN D. GIBBS,
 MELVIN E. GIBBS,

SUPERVISOR EUGENE J. GIBBS
 COUNTY SUPERVISOR EUGENE J. GIBBS

1960

DESIGNED BY
 STATE PUBLIC SCHOOL BUILDING AUTHORITY
 OFFICE: 1000 MARKET STREET, PHILADELPHIA, PENNSYLVANIA 19107
 HUNTER, HEIGES & GROSS A.L.A. - N.S.P.E. ARCHITECTS
 1000 MARKET STREET, PHILADELPHIA, PENNSYLVANIA 19107

PLAQUE IN LOBBY

SENIOR CLASS OF 1961



W. B. WOLFE
SCHOOL

SCHOOL



HISTORY

The Reynolds Area Joint Schools include the school districts of Delaware Township, Fredonia Boro, Pymatuning Township, and West Salem Township. By action of the school boards in these districts, Articles of Agreement were formally adopted on July 12, 1956. This agreement was the result of many meetings and long hours of thought, discussion, and study. The site for the new Reynolds Area High School was donated by the Greenville Business Men's Association, Trustees Reynolds Development. On February 21, 1956, the firm of Hunter, Heiges, and Gross was selected as architects to draw up plans and specifications for the new secondary school.

The State Public School Building Authority accepted bids for this project which were opened February 26, 1959, and the contracts were awarded for the construction of Reynolds Area High School on March 18, with actual construction beginning in April of 1959. A formal ceremony was held September 19, 1959, for laying the cornerstone.

A complete operation of all public schools in the Reynolds Area was assumed by the Reynolds Area Joint School Board on July 4, 1960. September 7, 1960, was the first day of school for the 1960-61 school term, and marked the opening of the new Reynolds Area Junior-Senior High School. The pupils who entered this school came with various backgrounds. Pupils from Fredonia Boro and Delaware Township had attended the elementary schools in grades 1 through 6; and the Fredonia-Delaware Junior-Senior High School in grades 7 through 12. In Pymatuning Township, the elementary school included grades 1 through 8 with most high school students in grades 9 through 12 attending Farrell Schools. Pupils in West Salem Township attended grades 1 through 8 at either the West Salem Consolidated School or the St. Paul Home School while pupils in grades 9 through 12 for the most part attended either Pymatuning Joint School at Jamestown or Greenville Schools.

The opening of Reynolds Area Junior-Senior High School closed the one room buildings in Delaware Township that had been operated on a graded basis and converted the Fredonia-Delaware Junior-Senior School to an elementary building. The present arrangement provides the Fredonia-Delaware building at Fredonia, Pymatuning Elementary School at Transfer, West Salem Consolidated School at Maysville, and St. Paul Home School for elementary grades 1 through 6. Secondary pupils in the Reynolds Area, grades 7 through 12, attend the new Reynolds Area Junior-Senior High School.

REYNOLDS AREA BOARD OF SCHOOL DIRECTORS BY DISTRICTS

DELAWARE TOWNSHIP

H. B. Means, Sr., President
Ralph H. Gamble, Secretary
Orval L. Gilson*
Robert H. LaSalle
Marvin E. Weikal*
Mrs. Kathryn Gehres
Fred E. Lawyer

PYMATUNING TOWNSHIP

Gustav R. Wall, President
R. C. Heile, Secretary**
Vincent R. Seidle
David J. Woods
Louis Homer*
Wade H. Frampton
Richard J. Ferguson
Clarence W. Hunt

FREDONIA BORO

Owen D. Boyer, President
John B. Mohny, Secretary**
Clyde D. Jewell*
Mrs. Donna Jamieson
Mrs. Nora Crocker
Homer L. Harpst
Homer Pettit

WEST SALEM TOWNSHIP

D. E. Gruver, President
Arthur R. Zuschlag, Secretary**
Fred L. Riley*
Ben T. Slagle
Alva W. Molton*
George E. Cowan*
Clifford A. Irvine
James L. Preston
Carl E. Royal

*Former Board members during the planning and organizational period, 1956-1960.

**Non-member Secretaries



REYNOLDS AREA JOINT SCHOOL BOARD

Gustav R. Wall, President; Ralph H. Gamble, V. President; H. B. Means, Secretary

- Row 1. Nora Crocker, Ralph H. Gamble, Gustav R. Wall, H. B. Means, Kathryn Gehres.
 Row 2. Ben T. Slagle, D. E. Gruver, Clifford A. Irvine, David J. Woods.
 Row 3. R. C. Heile, Clarence W. Hunt, Owen D. Boyer, Donna Jamieson, Robert H. LaSalle.
 Row 4. John B. Mohny, Arthur R. Zuschlag, Carl E. Royal, James L. Preston.
 Row 5. Fred E. Lawyer, Homer L. Harpst, Wade H. Frampton, Richard J. Ferguson. Absent: Homer Pettit.



CARL F. WELCH
Supervising Principal



RAYMOND J. BOST
High School Principal



SECRETARIES
 Margaret Clarke
 Patricia McElhaney
 Annetta Eich

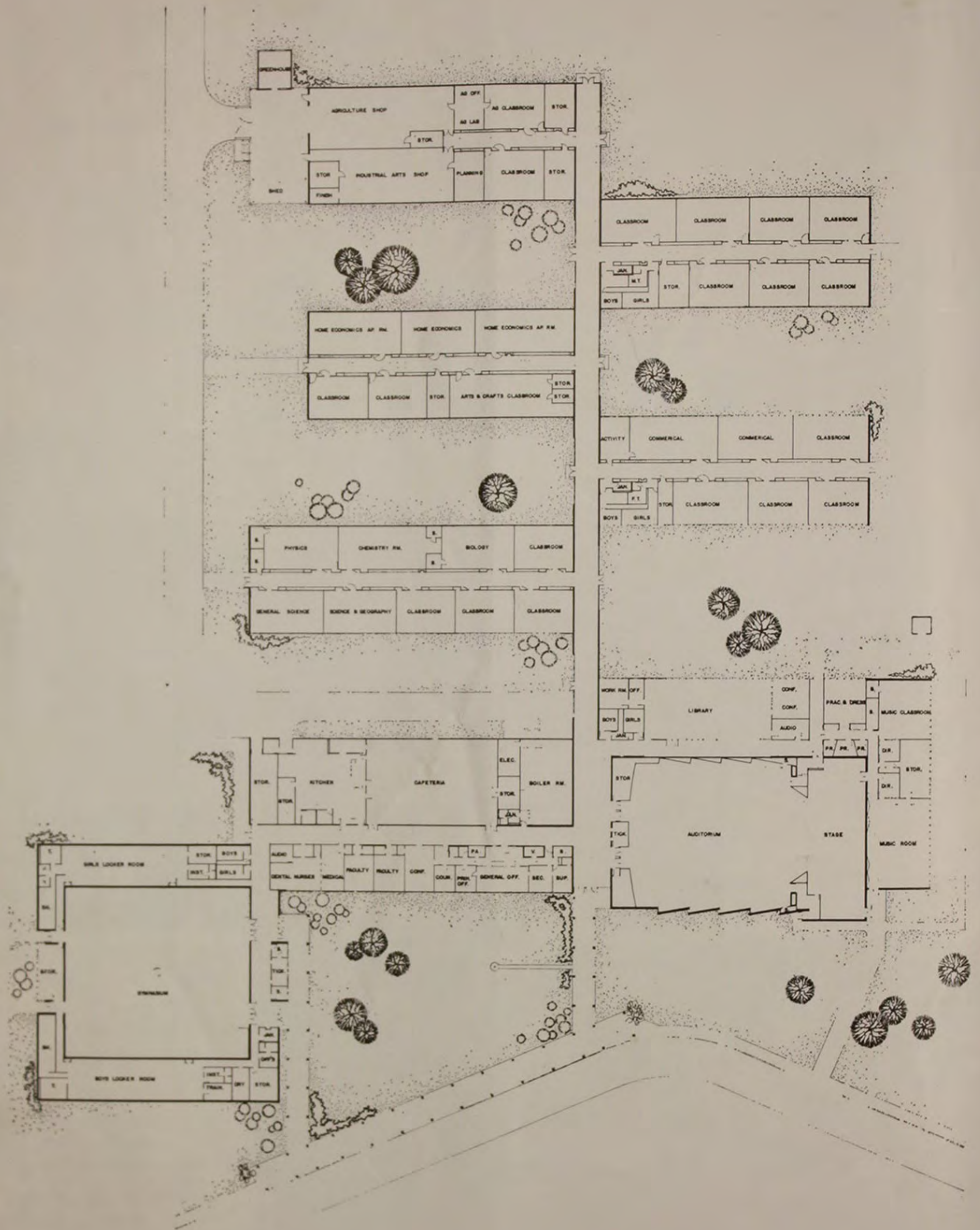
CAFETERIA PERSONNEL

- Lillian Walter
- Ruth Leasure
- Novella LaSalle
- Alice Glunt
- Neva Montgomery
- Sarah Landfried
- Hattie Harpst

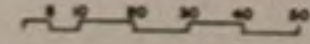


CUSTODIANS

- Row 1
- Alfred L. Gilson
 - Fred J. Homer
 - Emanuel B. Jones
- Row 2
- Ernest L. Bundy
 - Dorothy Boyer
 - Anna Mischick
 - F. H. Kent



REYNOLDS AREA JOINT SECONDARY SCHOOL
 HUNTER, HEIGES & GROSS ARCHITECTS & ENGINEERS



DEDICATION PROGRAM

REYNOLDS AREA HIGH SCHOOL

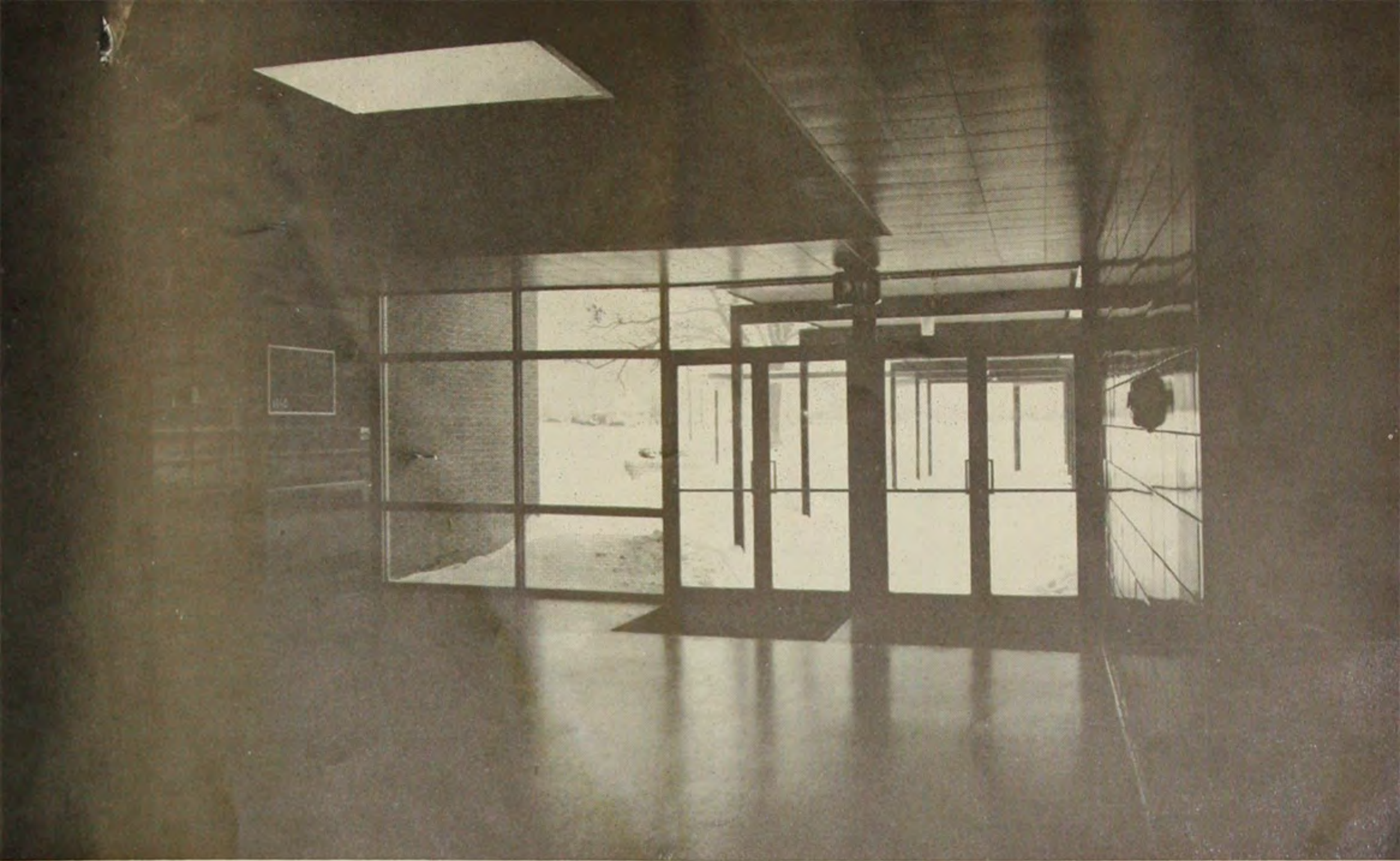
March 12, 1961, 3:00

High School Auditorium

Band Concert (2:40 - 3:00)	Reynolds Area High School Band Thomas W. Jeffries, Director
Presiding	Gustav R. Wall President, Reynolds Area Joint School Board
National Anthem	Reynolds Area High School Band
Invocation	Rev. Morris H. Cooper Superintendent, St. Paul Home
Remarks of Welcome	Raymond J. Bost Principal, Reynolds Area High School
Introductions	Gustav R. Wall
Presentation of Flag	Ralph H. Gamble Vice-President, Reynolds Area Joint School Board
Acceptance of Flag	Thomas Eckley President, Senior Class
Presentation of the Building	Donald E. Hunter Architect, Hunter, Heiges & Gross
Acceptance of the Building: For The Authority	Claude R. Greiner Chief Architect, State Public School Building Authority
For the Local School	Carl F. Welch Supervising Principal, Reynolds Area Joint Schools
Remarks	Captain R. C. Bartman Executive Director, State Public School Building Authority
Remarks	John B. Cutler Superintendent, Mercer County Schools
Musical Selections	Reynolds Area High School Chorus Mrs. Pauline Boyer, Director
Benediction	Rev. Morris H. Cooper

(All areas of the building will be open for inspection for one hour following the program)

—♦♦♦—
THIS BUILDING IS DEDICATED TO BOYS AND GIRLS OF THE ENTIRE
AREA SERVED BY THE REYNOLDS AREA JOINT SCHOOLS



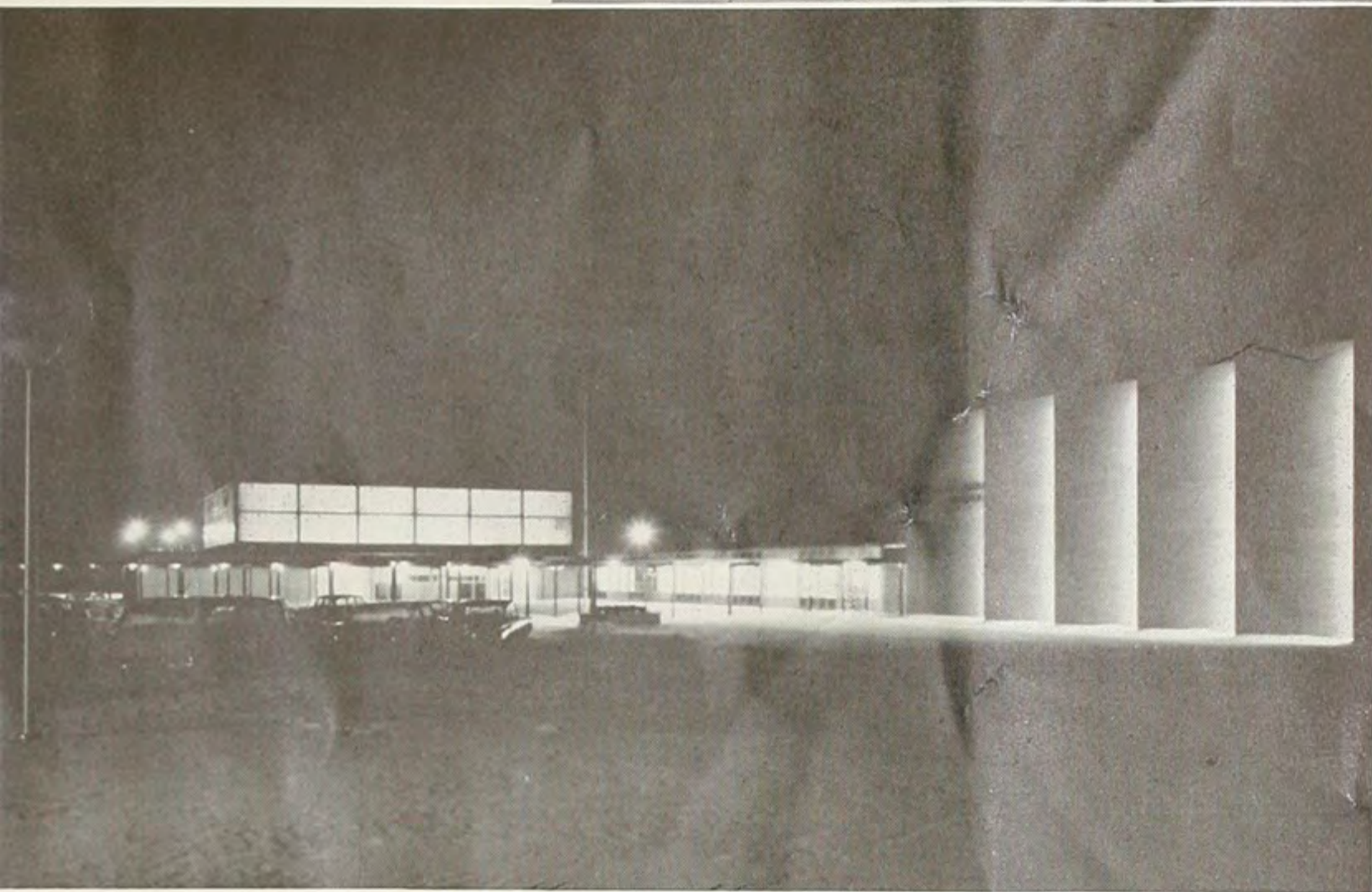
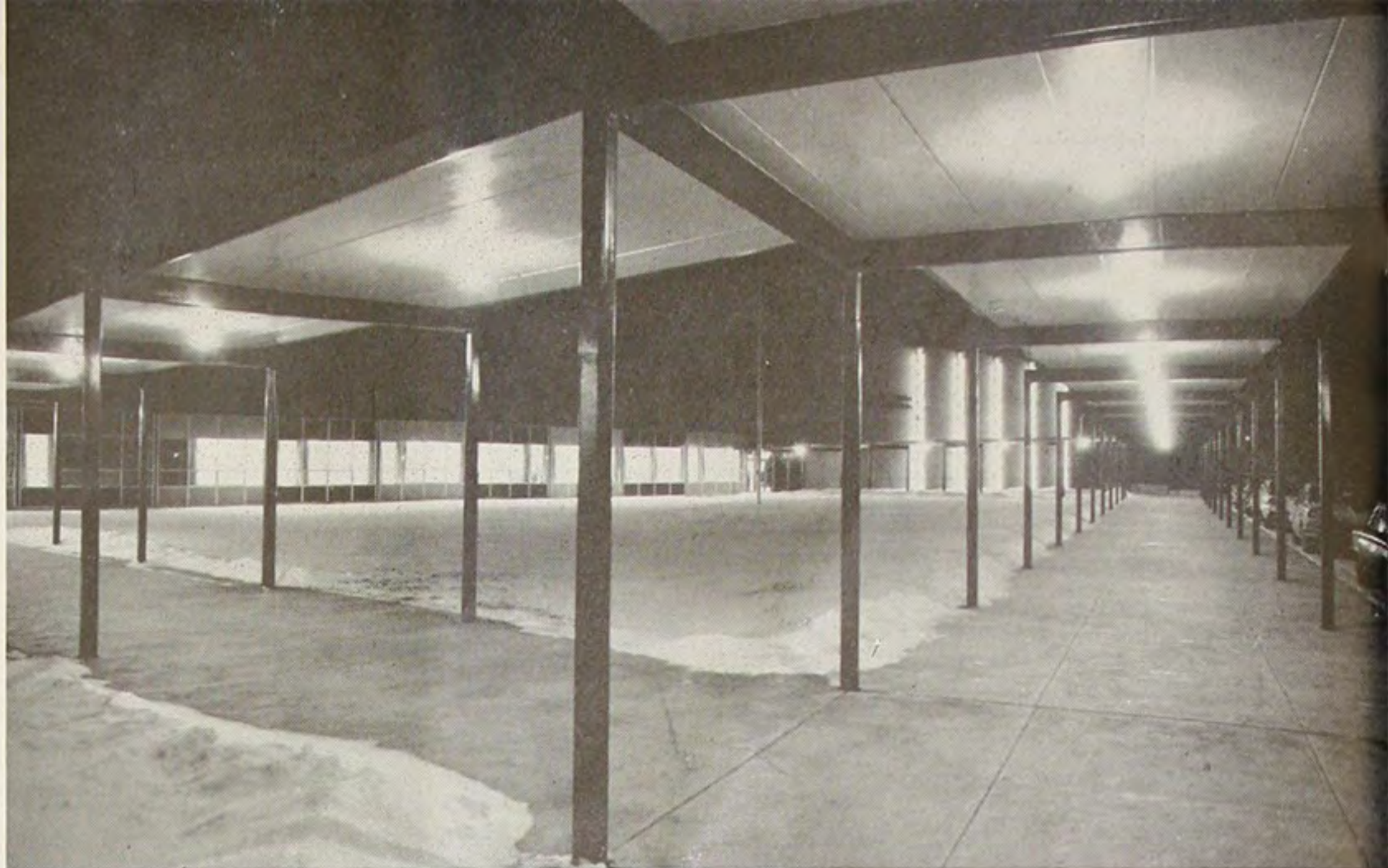
MAIN ENTRANCE FROM INSIDE

MAIN ENTRANCE

MAIN CORRIDOR

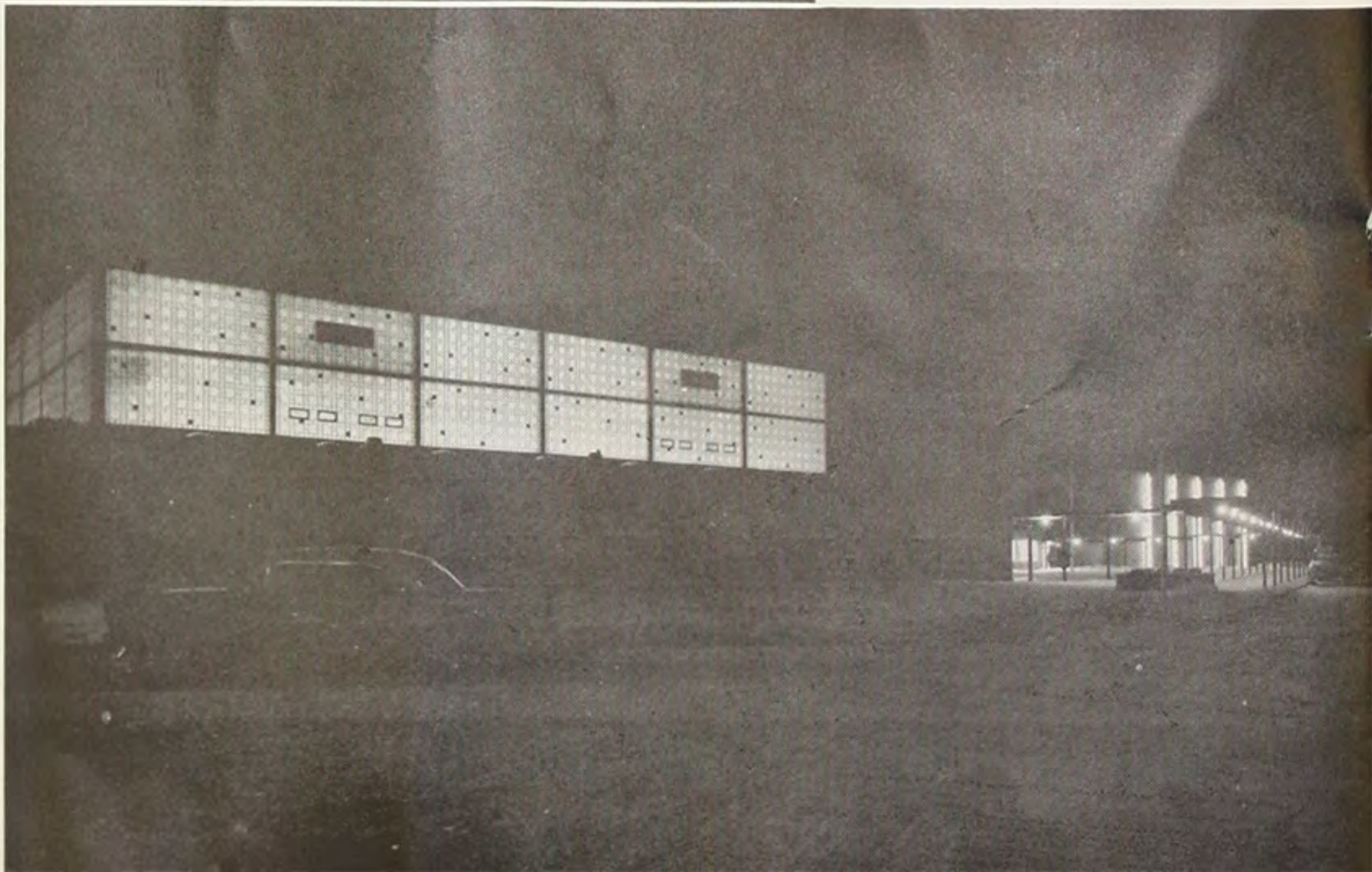


WALKWAY
AT NIGHT

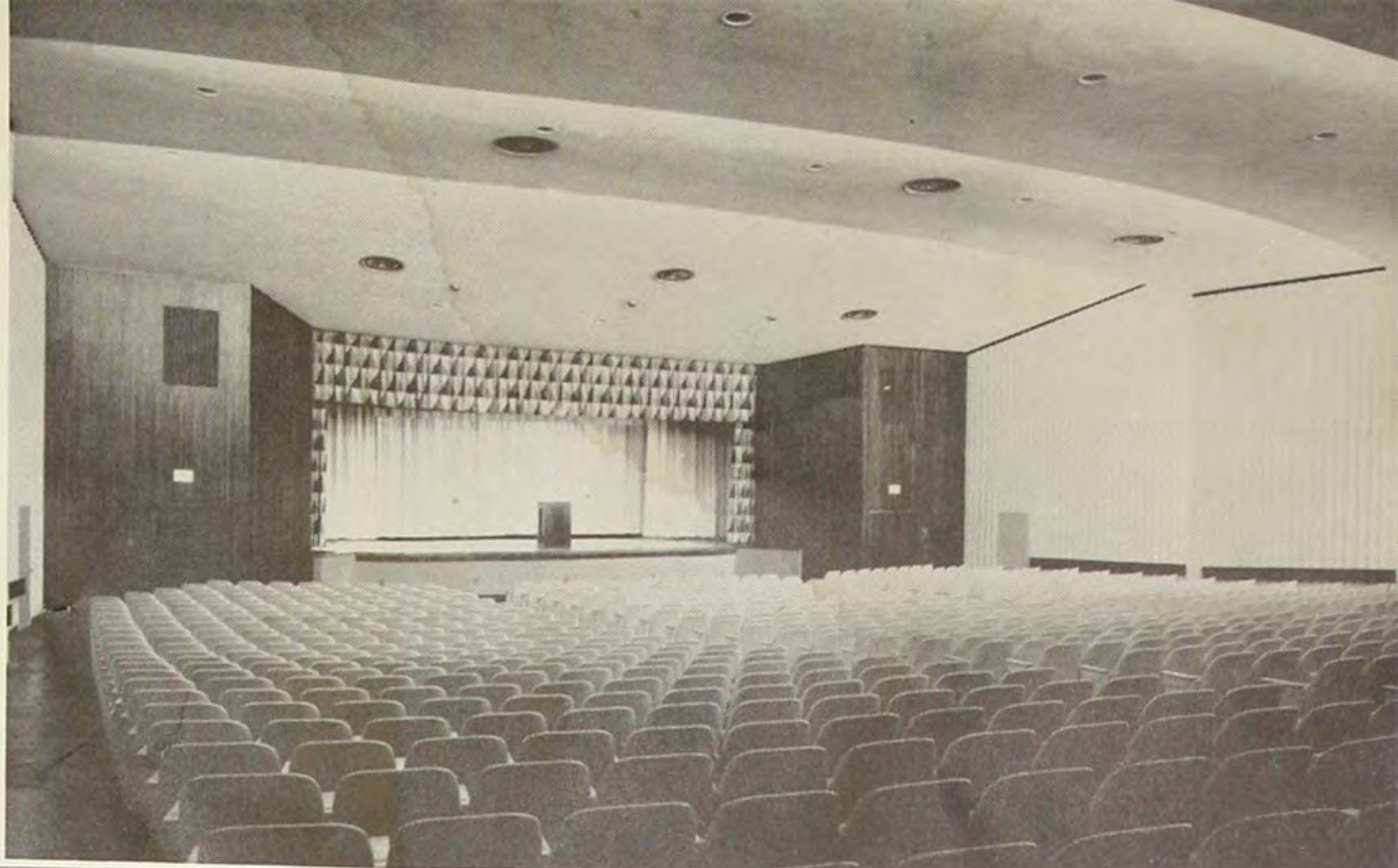


GYMNASIUM
OFFICES
AUDITORIUM
AT NIGHT

GYMNASIUM
AT NIGHT



AUDITORIUM



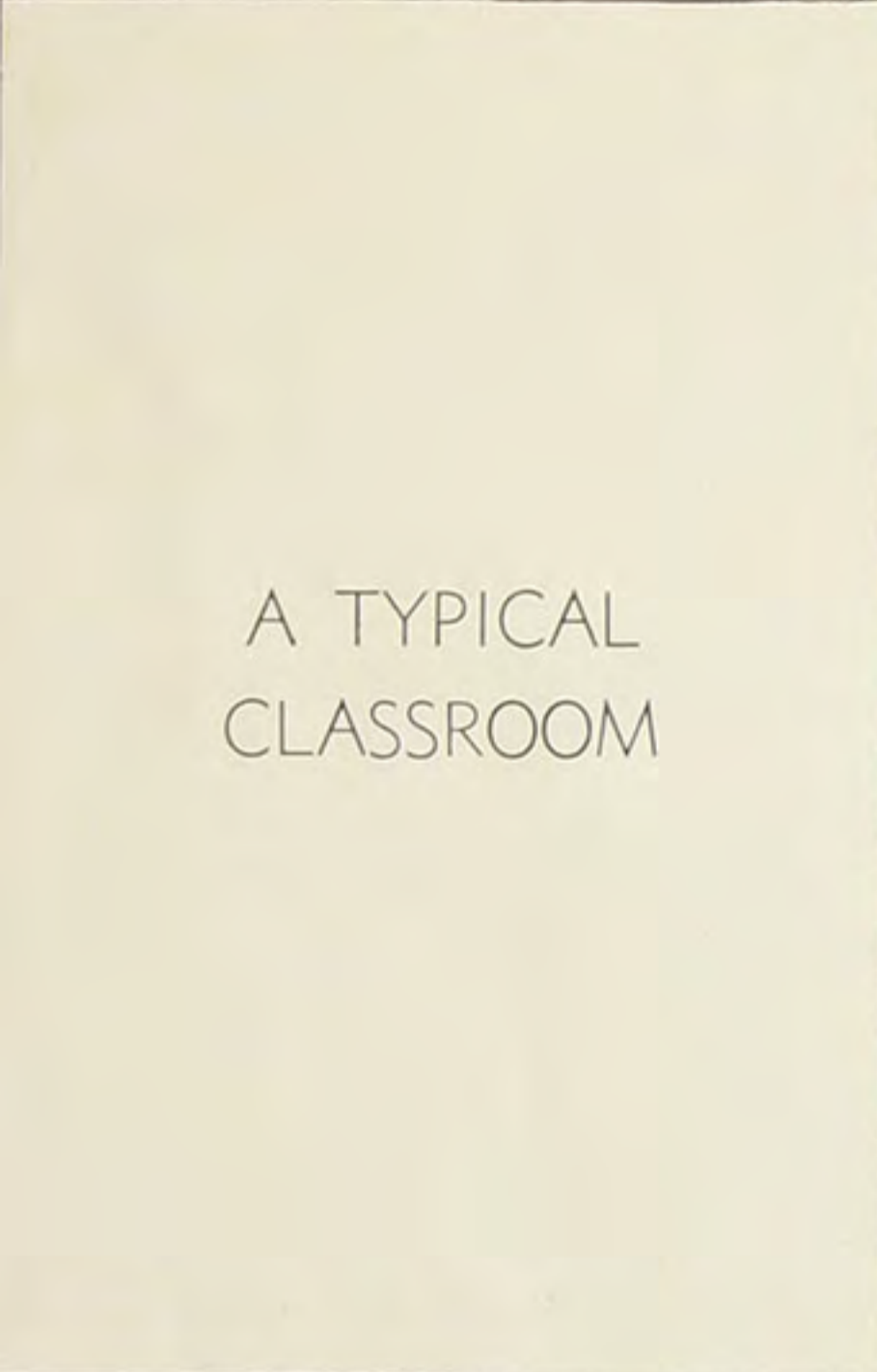
CAFETERIA

GYMNASIUM





CLASSROOM
CORRIDOR



A TYPICAL
CLASSROOM



LIBRARY



REYNOLDS AREA JOINT HIGH SCHOOL FACULTY

- Row 1. Henrietta McCurdy, Joyce Berry, Carol Heider, Eleanor Sunderlin, Martha Ellenberger, Mary Brown.
- Row 2. Thomas Jeffries, Sarah Steffey, Jean Heissenbuttel, LaVine Baird, Pauline Boyer, Barbara DeNicola, Dama Gladd, Norma Wilcox.
- Row 3. Ronald Krieder, C. LeRoy Armour, Andrew Gall, Joseph Magargee, James Smith, Evelyn Leisher, Joanne Marini, Patricia McDougall, Charles Garrett.
- Row 4. Ruth Bundy, Treva Hillman, Charlotte Mercer, Theodore Ferrara, Richard Sherwood, Harry Wasser, Paul Nye, Reed Franz, Ralph Bouch.
- Row 5. Richard Ebbert, Lydia Caskey, Donna Preston, Allen Collins, Donald Thomas, Donald McCoy, Robert Seiple.
- Nancy Nordstrom (Elected after picture was taken).